

The Institute for the Environment and Sustainability

Professional Symposium - October 22, 2011

Shriver Center Multipurpose Room B Miami University - All welcome, no registration necessary.



1:00 - 2:00

Renewable Energy in the Private and Public Sectors

Moderator: C.S. Chen, Professor of Electrical and Computer Engineering

Kemp Jaycox

Energy Consultant and Project Manager
Osborn Engineering

Marcy Bauer

Energy Fellow, North Carolina State University
Solar Center's Clean Transportation Team

Greg Hume

Program Manager, Energy and Environmental Service
TechSolve

2:00-2:30 Informal interaction with Environmental Professionals

2:30-3:30

Sustainability and Environmental Compliance on Campus

Moderator: Yvette Kline, Director of Sustainability & Energy Conservation

Sharmila Pradhan

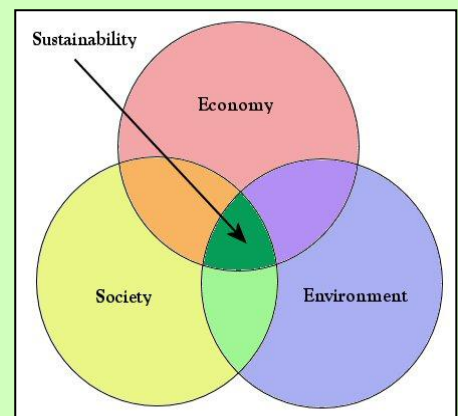
Environmental Manager, Environmental Health
& Safety, Western Kentucky University

Melanie Kintner Knowles

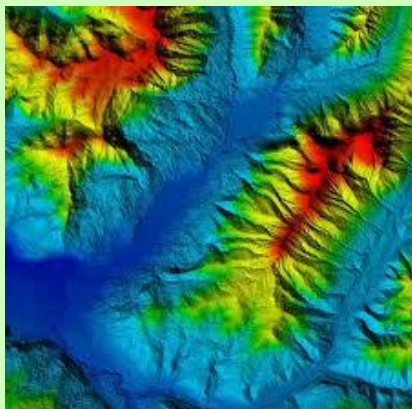
Sustainability Manager, Kent State University

Stacy Edmonds Wheeler

Sustainability Specialist, Ball State University



3:30-4:00 Informal interaction with Environmental Professionals



4:00-5:00

GIS, Planning and Resource Management

Moderator: Adam Berland, Instructor, IES

Brett Governanti

GIS Technician, City of Casper, Wyoming
Information Technology Division

Anantha Prasad

Research Ecologist, USDA Forest Service

Matt Leshner

Environmental Specialist, Ohio Department of
Natural Resources

Sponsored By:

*The Departments of Botany, Geography, Geology, Zoology, The Western Program, The John E. Dolibois Development Fund and
The Miami University National Association of Environmental Professionals Student Chapter*